

Mosler Europe Limited

Somersham Road
St.Ives
Cambridgeshire
England
PE273LY

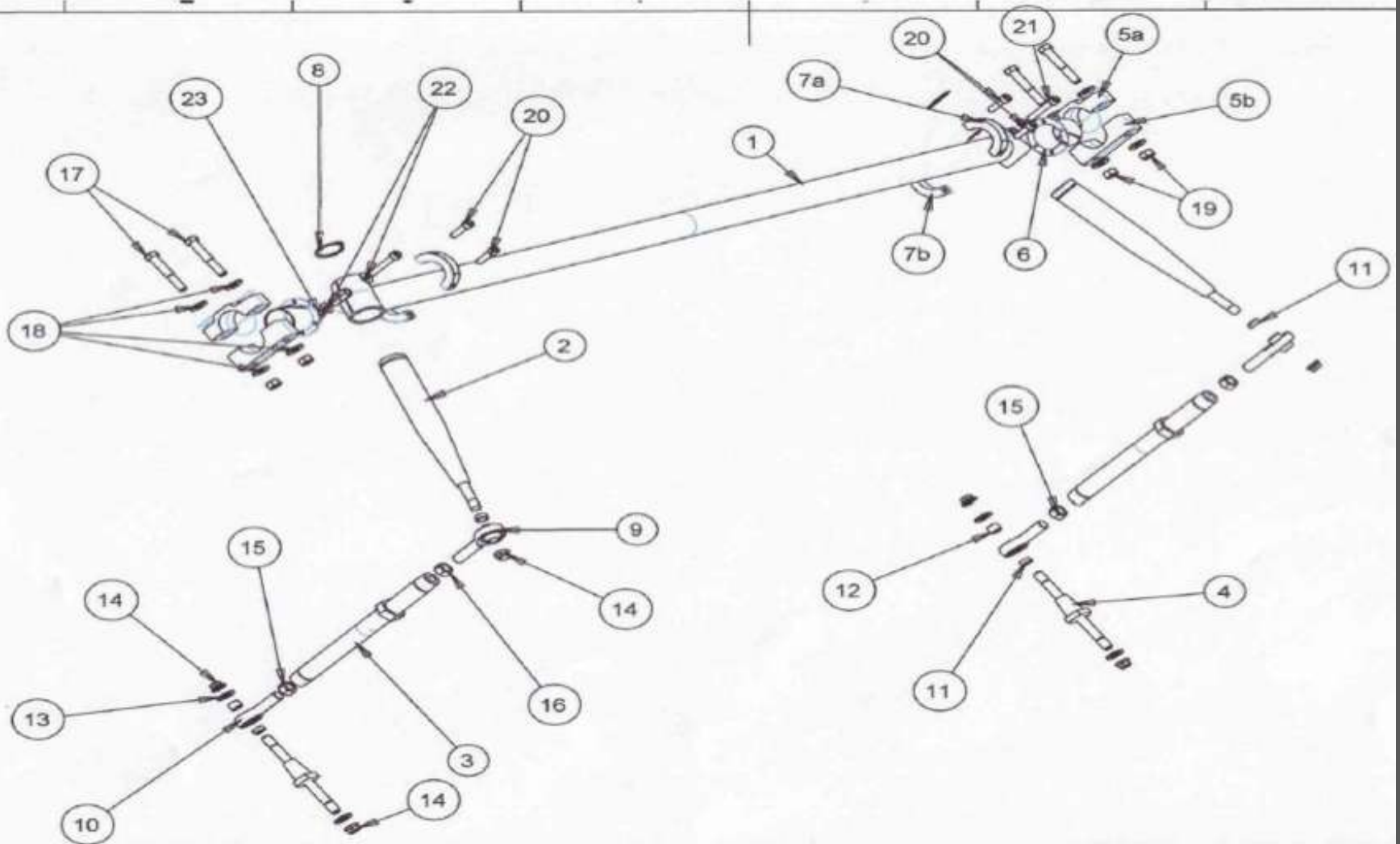
Tel : 0044 (0) 1480 498640
Fax: 0044 (0) 1480 461454
e mail: sales@mosler.co.uk
www.mosler.co.uk



MOSLER NEW ANTI ROLL BAR OPTIONS

- We have found a handling advantage by increasing the front anti roll bar diameter from 1.25" to 1.5" and reducing the rear anti-roll bar from 1.25" to 1".
- We have also changed the rear anti roll bar 'blades' to 'cones', the same as the front.
- The front roll is reduced, and it is easier to adjust the balance without hurting traction with the smaller bar and the 'cones'.

Front Anti Roll Bar



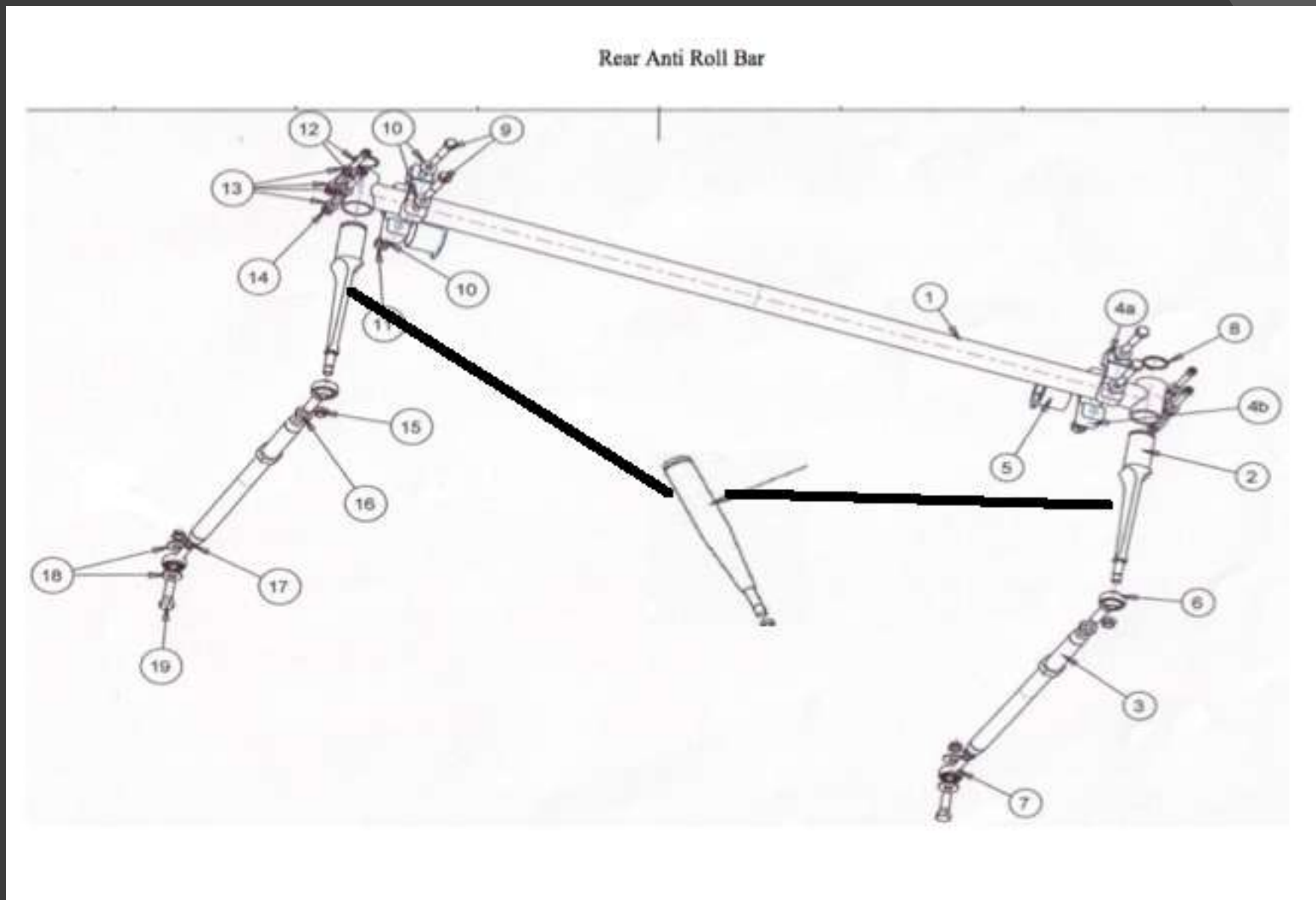
Anti Roll Bar Option - FRONT	1	MTRGT3-FS-0035	ANTI ROLL BAR 1.5"	221.02	221.02
	2	MTRGT3-FS-0063	FRONT & REAR ARB CLAMP ASSEMBLY 1.5"	47.13	94.26
	2	MTRGT3-FS-0080	1.5" DU BUSH	1.98	3.96
	2	MTRGT3-FS-0033	ARB COLLET PAIR 1.5"	32.50	65.00

Front Anti Roll Bar

Product List Mosler MT900GT3

<u>Number/Letter</u>	<u>Description</u>	<u>Bolt Type</u>	<u>Part Reference</u>	<u>Torque (Lbs.ft)</u>	<u>Torque (N.m)</u>
Front Anti Roll Bar					
1	Anti Roll Bar		MTRGT3-FS-0034		
1	Anti Roll Bar 1.5"		MTRGT3-FS-0035		
2	Front Anti Roll Bar Cone		MTRGT3-FS-0051		
3	Front Anti Roll Bar Drop Link		MTRGT3-FS-0044		
4	Front Damper Stud		MTRGT3-DP-0015		
5	Front Anti Roll Bar Clamp Assembly		MTRGT3-FS-0032		
6	Anti Roll Bar DU Bush		MTRGT3-FS-0031		
7a	Anti Roll Bar Collet Upper		MTRGT3-FS-0032		
7b	Anti Roll Bar Collet Lower		MTRGT3-FS-0033		
8	Circlip				
9	3/8" x 7/16" UNF RH High Angle Rod End		MTRGT3-ZZ-0006		
10	3/8" x 7/16" UNF LH Rod End		MTRGT3-ZZ-0005		
11	Spacer				
12	Spacer				
13	3/8" Thick Washer	3/8"	MTRGT3-ZZ-0018		
14	3/8" Knut	3/8" UNF	MTRGT3-ZZ-0025	40	54
15	3/8" UNF RH Half Nut	3/8" UNF	MTRGT3-ZZ-0009		
16	3/8" UNF LH Half Nut	3/8" UNF	MTRGT3-ZZ-0010		
17	5/16" UNF Bolt	5/16" UNF		23	31
18	1/4" Thick Washer	1/4"	MTRGT3-ZZ-0014		
19	5/16" UNF Nut	5/16" UNF			
20	1/4" UNF Bolt	1/4" UNF		10	14
21	1/4" UNF Bolt	1/4" UNF		10	14
22	1/4" Thick Washer	1/4"	MTRGT3-ZZ-0014		

Note, the rear 'Cone' is shown. Ignore the blades



Cones for Rear ARB	2	MTRGT3-RS-0080	REAR ANTI ROLL BAR CONE	221.02	442.04
	2	MTRGT3-RS-0081	REAR ANTI ROLL DROP LINK TO SUIT CONE RS-0080	95.00	190.00
	2	MTRGT3-ZZ-0006	ROD END 3/8 X 7/16 RH THREAD HIGH ANGLE	64.44	128.88
Cones for Rear ARB	2	MTRGT3-RS-0080	REAR ANTI ROLL BAR CONE	119.99	239.98
	2	MTRGT3-RS-0081	REAR ANTI ROLL DROP LINK TO SUIT CONE RS-0080	95.00	190.00
	2	MTRGT3-ZZ-0006	ROD END 3/8 X 7/16 RH THREAD HIGH ANGLE	64.44	128.88

Rear Anti Roll Bar

<u>Number/Letter</u>	<u>Description</u>	<u>Bolt Type</u>	<u>Part Reference</u>	<u>Advised Tightening Torque (Lbs.ft)</u>	<u>Advised Tightening Torque (N.m)</u>
Rear Anti Roll Bar					
1	Rear Anti Roll Bar 1"		MTRGT3-RS-0059		
1	Rear Anti Roll Bar		MTRGT3-RS-0061		
2	Rear Anti Roll Bar Blade		MTRGT3-RS-0040		
3	Rear Anti Roll Bar Drop Link		MTRGT3-RS-0008		
4a	Anti Roll Bar Collet Upper		MTRGT3-FS-0032		
4b	Anti Roll Bar Collet Lower		MTRGT3-FS-0033		
5	Anti Roll Bar DU Bush		MTRGT3-FS-0031		
6	3/8" x 1/4" RH High Angle Rod End		MTRGT3-ZZ-0070		
7	7/16" x 3/8" LH Rod End		MTRGT3-ZZ-0005		
8	Circlip				
9	5/16" UNF Bolt	5/16" UNF		23	31
10	1/4" Thick Washer	1/4"	MTRGT3-ZZ-0014		
11	5/16" Knut	5/16" UNF	MTRGT3-ZZ-0024	23	31
12	1/4" UNF Bolt	1/4" UNF		10	14
13	1/4" Thick Washer	1/4"	MTRGT3-ZZ-0014		
14	1/4" Knut	1/4" UNF	MTRGT3-ZZ-0023	10	14
15	1/4" Knut	1/4" UNF	MTRGT3-ZZ-0023	40	54
16	3/8" LH UNF Half Nut	3/8" UNF	MTRGT3-ZZ-0010		
17	7/16" RH UNF Half Nut	7/16" UNF	MTRGT3-ZZ-0011		
18	3/8" Thick Washer	3/8"	MTRGT3-ZZ-0018		
19	3/8" UNF Bolt	3/8" UNF		40	54